

COOKED CRAB CLAWS



\$2.50/LB

JUMBO LOBSTER TAILS (1 LB+)



\$15.00/EA

LIVE CRABS EVERY DAY



SOLD BY THE BUSHEL OR DOZEN

Save

SUPER SAVINGS EVERY DAY!

Save



**SPICY
TUNA
CAKES**
\$2.50/EA



**BROILED SALMON
'BURGER'
PATTIES**
\$2.50/EA



**HOMEMADE
FRIED
CATFISH FILLETS**
\$2.50/EA



**AUNT CONNIE'S
HANDCRAFTED
FISH CAKES**
\$2.50/EA



**BUFFET-CUT
COD**
\$2.50/LB

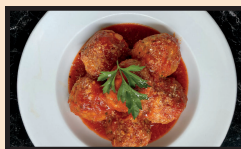


**GIANT
STUFFED
CLAMS**
\$2.50/EA



**CHOPPED
CLAM
PIZZA**
\$2.50/EA

\$5 DEALS



**UNCLE TONY'S
TUNA
MEATBALLS**
\$5.00 (3)



**SPANISH
DRIED
PLUMS**
\$5.00/QT



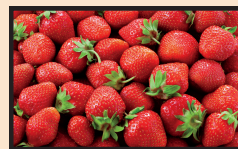
**CRISPY
LUMP CRAB
CAKES**
\$5.00/EA



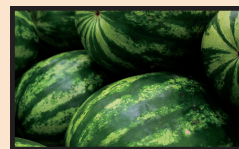
**SOUTH PHILLY
ITALIAN
SAUSAGE**
\$5.00/LB



**FRESH NEW
JERSEY
BLUEBERRIES**
\$5.00



**FRESH
CALIFORNIA
STRAWBERRIES**
\$5.00



**FRESH
WHOLE
WATERMELONS**
\$5.00

UNBELIEVABLE SAVINGS



**AUNT ROSIE'S
ROASTED
PEPPERS**
\$10.00/QT



**HOMEMADE
LOBSTER MAC &
CHEESE**
\$10.00/EA



**HOMEMADE
CRAB & CORN
BISQUE**
\$10.00/QT



**SNOW CRAB
LEGS
10 LB CASE**
\$10.00/LB



**FRESH
STEAMED
LOBSTERS**
\$15.00/EA



**FRESH
JUMBO LUMP
CRABMEAT**
\$15.00/LB



**10 OZ
NY STRIP
STEAK**
\$15.00/EA



**SKIN-OFF
GROUPE FILLETS**
\$20.00/LB



**RED SNAPPER
FILLETS**
\$20.00/LB



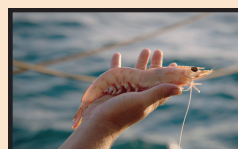
**SKIN-ON
BRONZINO FILLETS**
\$20.00/LB



**LUMP
CRABMEAT**
\$20.00/LB



**AUNT CONNIE'S
CRAB SALAD**
\$20.00/QT



**WILD AUSTRALIAN
HEAD-ON PRAWNS**
\$20.00/LB



**SWORDFISH
LOINS**
\$20.00/LB

SIZZLING SPECIALS



**4-PACK / 4-5 OZ
LOBSTER TAILS**
\$20.00/BOX



**WILD ALASKA
HALIBUT FILLETS**
\$20.00/LB



**WILD ALASKA
SABLEFISH FILLETS**
\$20.00/LB



**SUSHI-GRADE
BLUEFIN TUNA**
\$30.00/LB



**FRESH
LOBSTER SALAD**
\$25.00/QT



**8 OZ FILET
MIGNON**
\$25.00/EA



**LOCAL DRY
SCALLOPS**
\$25.00/LB

GIUSEPPE'S
MARKET
AT SAMUELS SEAFOOD CO. ESTD 1929

**SOUTH PHILLY'S
LARGEST SEAFOOD MARKET**

Open Monday-Saturday 8:00AM-4:30PM
GiuseppesMarket.com
3400 South Lawrence St | Philadelphia | PA
Located near the Broad Street Line - NRG Station
(215) 389-8906

ALL PRICES AND AVAILABILITY SUBJECT TO CHANGE THROUGH 6/25/25.